

Pellets by Stora Enso



Ala Mill

Ala Sawmill, Industrivägen 7,
820 20 Ljusne, Sweden

In brief

Established: 1854
Annual capacity:
400.000 m³ sawn timber
90.000 t pellets

Fact sheet – Ala Mill

Reliable heating and bedding from a renewable resource. Stora Enso's quality wood pellets – made from shavings, dry chips and sawdust by-products from our own sawmills – offer a reliable, cost-efficient source of energy for residential, commercial or industrial heating. They are also a popular choice for horse bedding that's comfortable, hygienic and hassle-free.

Quality pellets products produced at Ala Mill

From forest to front door, we are responsible for the entire production and supply chain. We integrate our wood pellet production directly after the planing line, reducing unnecessary transport.

Ala Sawmill in Ljusne, central Sweden, produces sawn timber, processed timber and pellets from pine logs. Our 6 mm superior quality pellets are made from sawn biproducts sourced from our own managed forests.

Our products meet the highest industry standards for quality and sustainability set by leading pellet certifications such as ENplus® (certified ENplus® A1) and DINplus. We also comply with ISO standards in eco and energy management.



16 kg bag | pallet

Small bag designed for practical residential or small business heating. Also provides excellent absorption when used as horse-bedding in stables.

Bulk | ton

Efficient filling and large volume for residential or commercial use. Also available for horse-bedding in stables.

Product specifications – Ala Mill

Pellets by Stora Enso consistently meet or exceed the rigorous standards set by ENplus®, and are certified as A1.

Technical parameter	ENplus® A1	Stora Enso	Unit	Testing standard
Size - diameter	6 ± 1 or 8 ± 1	6	mm	ISO 17289
Moisture content	≤ 10	≤ 8	%	ISO 18134-2
Ash content	≤ 0.7	≤ 0.4	%	ISO 18122
Ash deformation temperature	≥ 1 200	≥ 1 400	°C	CEN/TC 15370-1
Net calorific energy per kg	≥ 4.60	≥ 4.85	kWh	ISO 18125
Net calorific energy per m³	–	3 250	kWh	ISO 18125
Bulk density	600–750	650	kg/m³	ISO 17828
Mechanical durability	≥ 98	≥ 98–99	%	ISO 17831-1

Stora Enso values are approximate; exact values may vary per respective mill.

Source: Institut für Bioenergie, 2021. (Measurement done annually; specifications are subject to change)



Certification compliance and carbon footprint – Ala Mill

All products from Ala Mill are certified and independently verified per leading quality and sustainability standards for high performance and low environmental impact.

Pellets by Stora Enso certified products meet or exceed:

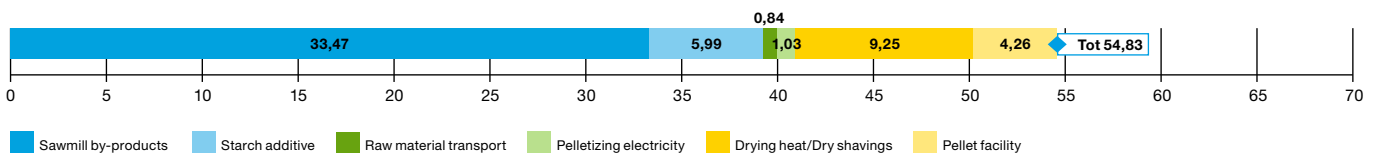
ENplus®	class A1	Europe's leading measure of consistent pellet quality.
DINplus	class A1	International standard for high quality burn performance and low ash content.

Ala certified operations and management systems:

FSC®	licence C125195	Chain of Custody. Wood traceability and Due Diligence system for all wood.
PEFC™	licence 02-32-32	Chain of Custody. Wood traceability and Due Diligence system for all wood.
ISO	standard 9001	Quality management and internal operations system.
ISO	standard 14001	Environmental management.
ISO	standard 45001	Occupational health and safety management.
ISO	standard 50001	Energy management.



The total carbon footprint of Ala Mill is 54,83 kg CO₂ eq. per 1 000 kg produced pellets. The diagram below shows the amount of CO₂ emissions at each stage in the production process. Raw material (i.e. sawmill by-products) accounts for the majority of emissions.



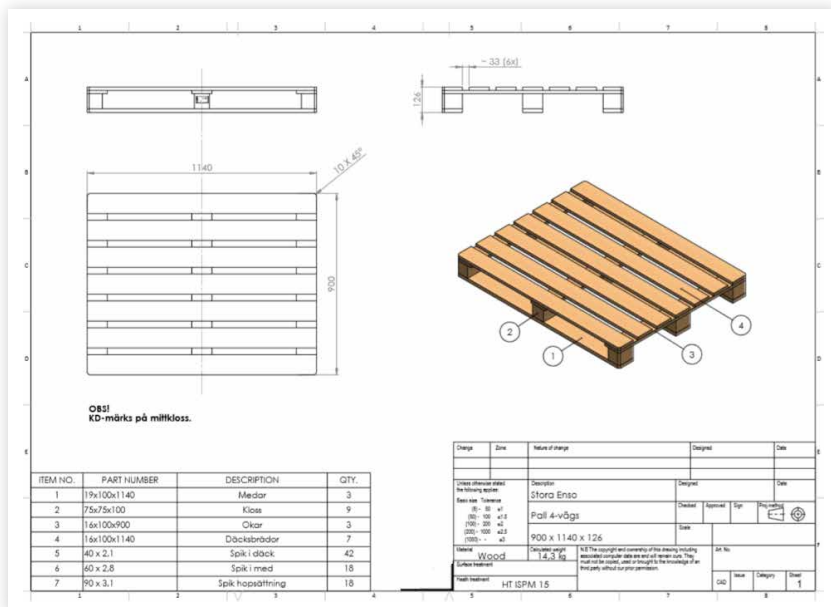
Download our comprehensive and independently verified Environmental Product Declaration (EPD) at www.storaenso.com/en/products/pellets

Would you like to know more about pellets as a sustainable energy source and our commitment to the environment? Contact us at sustainability.wp@storaenso.com

Pallet specifications and configuration – Ala

	16 kg bags
Pallet dimensions	800x1200x144 mm
Pallet weight	25 kg
Pallet height	165 cm
Layers per pallet	13
Number of units per pallet	52 bags
Number of pallets per trailer/truck	28–44
Total pallet weight (of which 1 kg wrapping + < 20 kg pallet)	860 kg
Unit dimensions	890x345 mm
Unit weight (empty)	44 g

Four-way pallet for 16 kg bags



16 kg Pellet Bag



16 kg Pellet Bags

Stora Enso – The renewable materials company

As part of the bioeconomy, Stora Enso is a leading global provider of renewable solutions in packaging, biomaterials, wooden constructions and paper. Our materials are renewable, reusable and recyclable, and form the building blocks for a range of innovative solutions that can help replace products based on fossil fuels and other non-renewable materials.

Wood Products division provides versatile wood-based solutions for building and housing. Our product range covers all areas of construction, including massive wood elements, wood components and sawn goods. The division operates globally and has more than 20 production units in Europe, including 9 pellet mills, located close to our customers.

storaenso.com/en/products/pellets
pellets@storaenso.com